

Contents

The following Help Topics are available:

[Main Screen](#)

[Menu Bar](#)

[Chronology](#)

[Characters](#)

[Geography](#)

[Search](#)

[Politics](#)

[Timeline](#)

[Trivia Quiz](#)

[Media Room](#)

[Technical Support](#)

For Help on Help, press **F1**.

Main Screen

When you run [Doonesbury Flashbacks](#), Zonk surfs by on the title animation, then the Main Screen appears.

To view the Main Screen animations, right-click each character.

Click the hotspots on the illustration below, or on the scrolling descriptions beneath it to jump to an explanation of that feature.



Point to a character to select a feature; click to use it as follows.

Rick Redfern

Choose a [Chronology](#) from listed eventful times.

Zonker

Meet the cool [Characters](#) in the comics.

Duke & Honey

Go to [Geography](#) and pick your place in the past to peruse.

Roland

[Search](#) the Doonesbury database.

Lacey Davenport

Ponder [Politics](#) in the places of power.

Mike Mirrored

Trip through the [Timeline](#) of Doonesbury strips from then til now.

Mike At The Podium

Take a test with the [Trivia Quiz](#).

Mark

Make Mark manipulate the [Media Room](#).

Rick Redfern

Choose a [Chronology](#) from listed eventful times.

Zonker

Meet the cool [Characters](#) in the comics.

Duke & Honey

Go to [Geography](#) and pick your place in the past to peruse.

Roland

[Search](#) the Doonesbury database.

Lacey Davenport

Ponder Politics in the places of power.

Mike Mirrored

Trip through the [Timeline](#) of Doonesbury strips from then til now.

Mike At The Podium

Take a test with the [Trivia Quiz](#).

Mark

Make Mark manipulate the [Media Room](#).

Chronology

10/27/70

SAY B.D., AS YOUR NEW ROOMMATE, I'M MOST NATURALLY VERY CURIOUS TO LEARN WHAT YOUR INTERESTS ARE.

I PLAY FOOTBALL.

OH, WOW! REALLY? FOOTBALL! JUST THINK OF THAT! WOW!

BOY, WHAT A PAIR WE'RE GOING TO MAKE! A FOOTBALL PLAYER AND A LOVER BOY!

I COULD GET YOU AND YOU COULD GET FOOTBALL TICKETS. CERTAINLY HAS AN ADVAN...

I W... I CO... OVE...

10-27

© 1970 UNIVERSAL PRESS SYNDICATE

G.B. Trudeau

ABOUT DOONESBURY

New Haven Register, March 1, 1970
The Bull Behind Bull Tales Or How To Be G. B. Trudeau And Not Die Laughing
Story by Robert Holland

Garry, Garrett B., G.B. Trudeau never made a diving catch in the end zone with 30 seconds to go, but he thought about it a lot, especially when he was a kid trying to make it as an end and he kept dropping the ball.

Trudeau, a senior design major at Yale, is tall and slender, nearly skinny. He wears white shirts with big bright cuff links pinching the material in at his wrists.

NEWS OF THE WEEK

- Clashes Continue Between Black Panthers and Police
- Jersey High Court Rules: No Jail for Time Marijuana Arrests

WHO SAID WHAT

I love Mickey Mouse more than any woman I've ever known. Disney.

View By List

View By Date

In this screen, you can view each [Doonesbury Flashback](#) comic strip in relation to the surrounding events it was created.

- 1 Click the **Red Arrows** at the turned page corners to advance through the strips one by one.
- 2 Click the **Blue Arrows** to go to the beginning or end of the list.
- 3 Read About [Doonesbury](#), get the **News of the Week**, and find out **Who Said What** when each strip was created.
- 4 Click the **Flashbacks Main Screen** button to return to the Main Screen.

The Chronology feature defaults to **View By Date**, this allows you to view all of the strips ever written to date, in chronological order.

To only view strips from a certain list:

- 1 Select a list from the **List** pulldown menu.
- 2 Click the **View By List** button.
- 3 To go back to viewing by date, click the **View By Date** button.

See Also:

[Lists](#)

Characters



- Daisy Doonesbury
- Alex Doonesbury
- Jeff Redfern
- Samantha
- Phil Slackmeyer
- Bernie
- Nichole

Click Right Mouse Button For Full-Length Biography.

- Ginny Slade
- Marcia Feinbloom
- Ray Hightower

- Jeremy Cavendish
- President Kin
- Phred
- Ellie
- Clyde
- Dr. Dan Ashe
- Jim Andrews

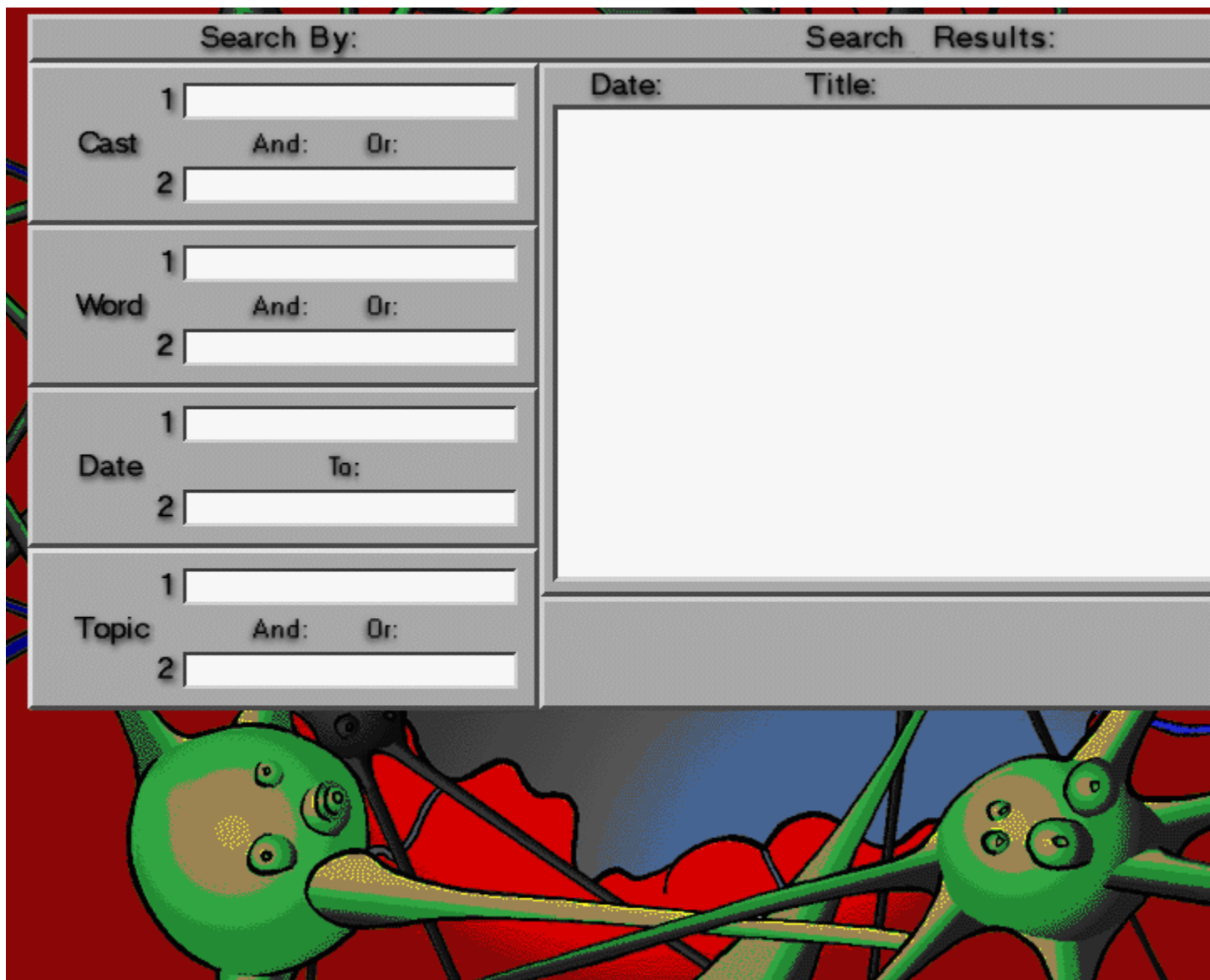
- 1 To read a characters short biography, move your mouse cursor over a face or a name.
- 2 To read a characters full-length biography, right-click a characters face or name.
- 3 To see the list of strips each character appears in, double-click the left mouse button on a face or name.
- 4 To see a list of strips in which two specific characters appear in, click two faces or names, then click the **Show Relationship** button.
- 5 Click the **Flashbacks Main Screen** button to return to the Main Screen.

Geography



- 1 Click any of the red **Doonesbury** icons on the US map to see a list of the strips related to that geographical location.
- 2 To view a strip, double-click your choice from the list.
- 3 To hear fun sounds, click the other symbols.
- 4 Click the **Map** button to toggle between the Asia and US maps.
- 5 Click the **Flashbacks Main Screen** button to return to the Main Screen.

Search



The image shows a search interface with a cartoon background of green alien characters. The interface is divided into two main sections: "Search By:" and "Search Results:".

Search By:

- Cast:** Two input fields labeled "1" and "2". Between them are buttons labeled "And:" and "Or:". The "And:" button is currently gray, while the "Or:" button is green.
- Word:** Two input fields labeled "1" and "2". Between them are buttons labeled "And:" and "Or:". Both buttons are currently gray.
- Date:** Two input fields labeled "1" and "2". Between them is a button labeled "To:". The button is currently gray.
- Topic:** Two input fields labeled "1" and "2". Between them are buttons labeled "And:" and "Or:". Both buttons are currently gray.

Search Results:

The "Search Results:" section has a header with "Date:" and "Title:" labels. Below the header is a large empty white area for displaying search results.

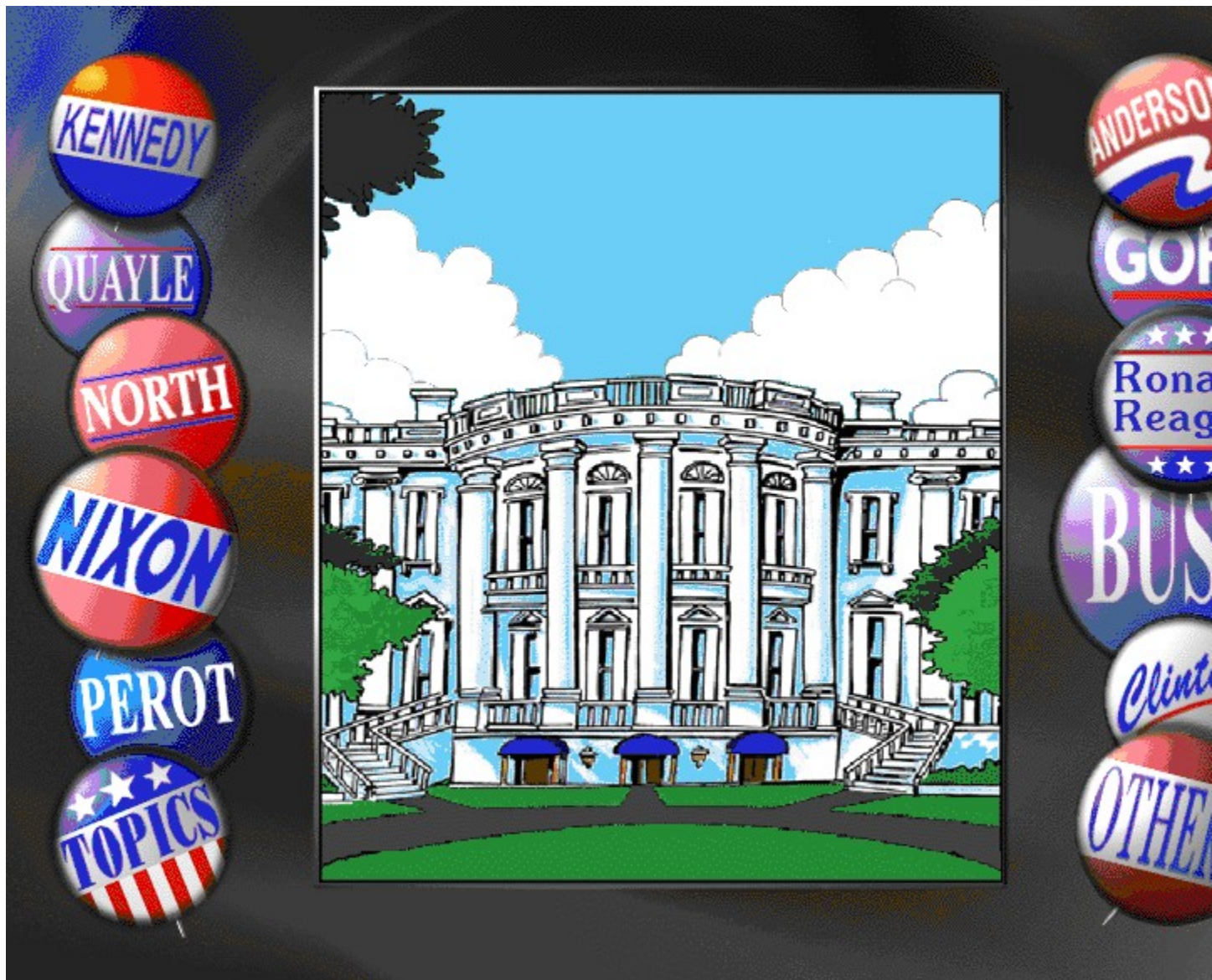
Peruse the database with Roland to find the exact strip you want.

How to search:

- 1 In the **Search By** column, click the arrow next to the search criteria you want to use. *For example*, click the gray arrows next to **Cast** and **Word**.
- 2 Enter text in the **Search By** fields. For example, enter **Zonker** in **Cast field #1**, **Duke** in **Cast field #2**, and **Colorado** in **Word field #1**. *Note:* You can also find a character name by clicking the down arrow next to the field and selecting it from the pulldown list.
- 3 Click any pertinent **And** or **Or** buttons. For example, click the **And** button between **Zonker** and **Duke**. The button turns green.

- 4 Click the **Search** button. A list of strips, which contain the above criteria, appears in the **Search Results** window.
- 5 To view a strip, double-click your choice from the list.
- 6 To clear the **Search By** fields and begin a new search, click the **New** button.
- 7 Click the **Flashbacks Main Screen** button to return to the Main Screen.

Politics

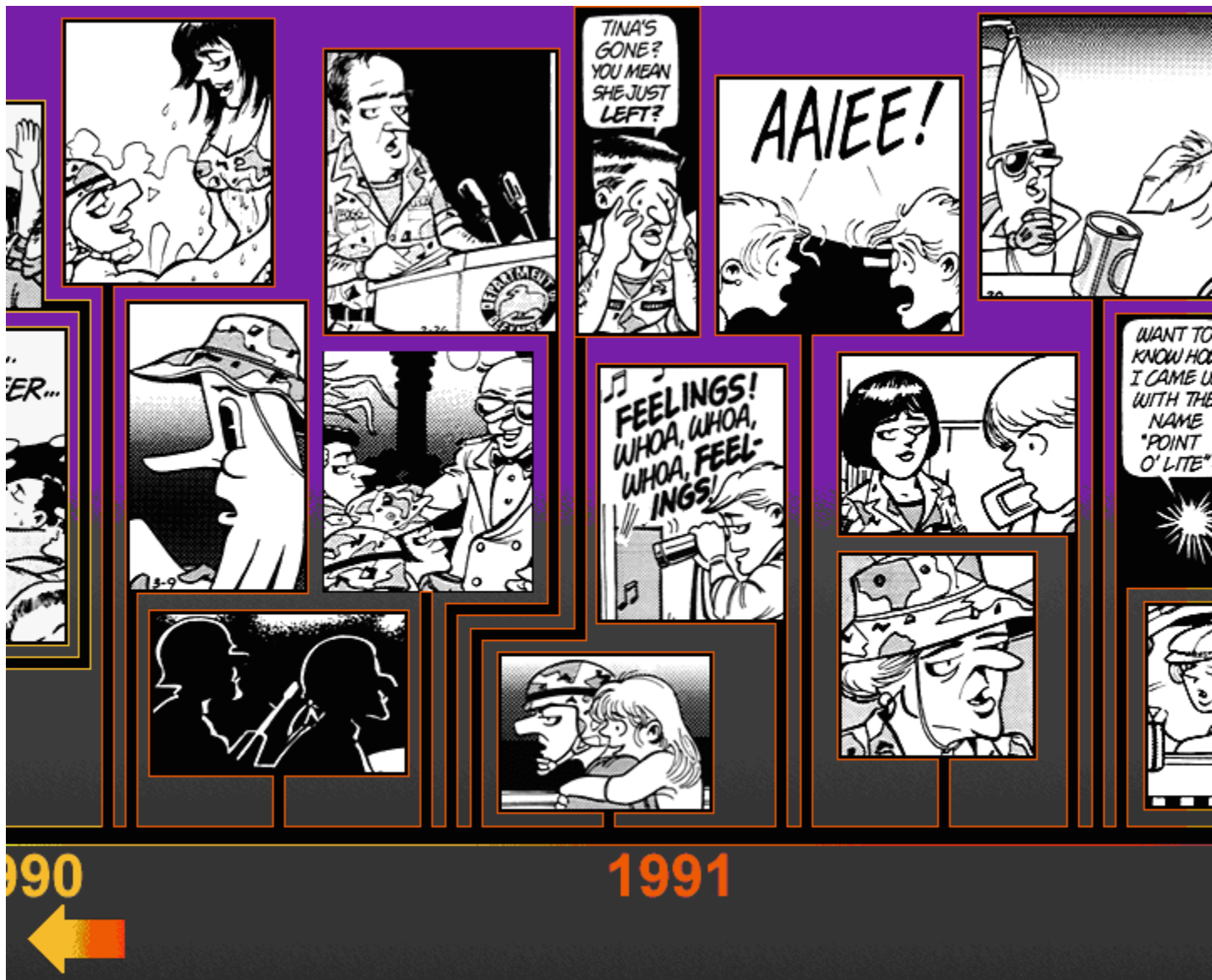


Select with Lacy Davenport a political comic.

To view a political comic strip:

- 1 Click a political characters name. A list of related strips appears.
- 2 To view a strip, double-click your choice from the list.
- 3 For a list of political topics, click **Topics**. If you want to view a strip from a specific topic, click the topic you like and a list appears. Double-click the strip of your choice from the list. If you want to leave the Topic list, click anywhere else on the screen.
- 4 For more political characters choices, click **Others**.
- 5 Click the **Flashbacks Main Screen** button to return to the Main Screen.

Timeline



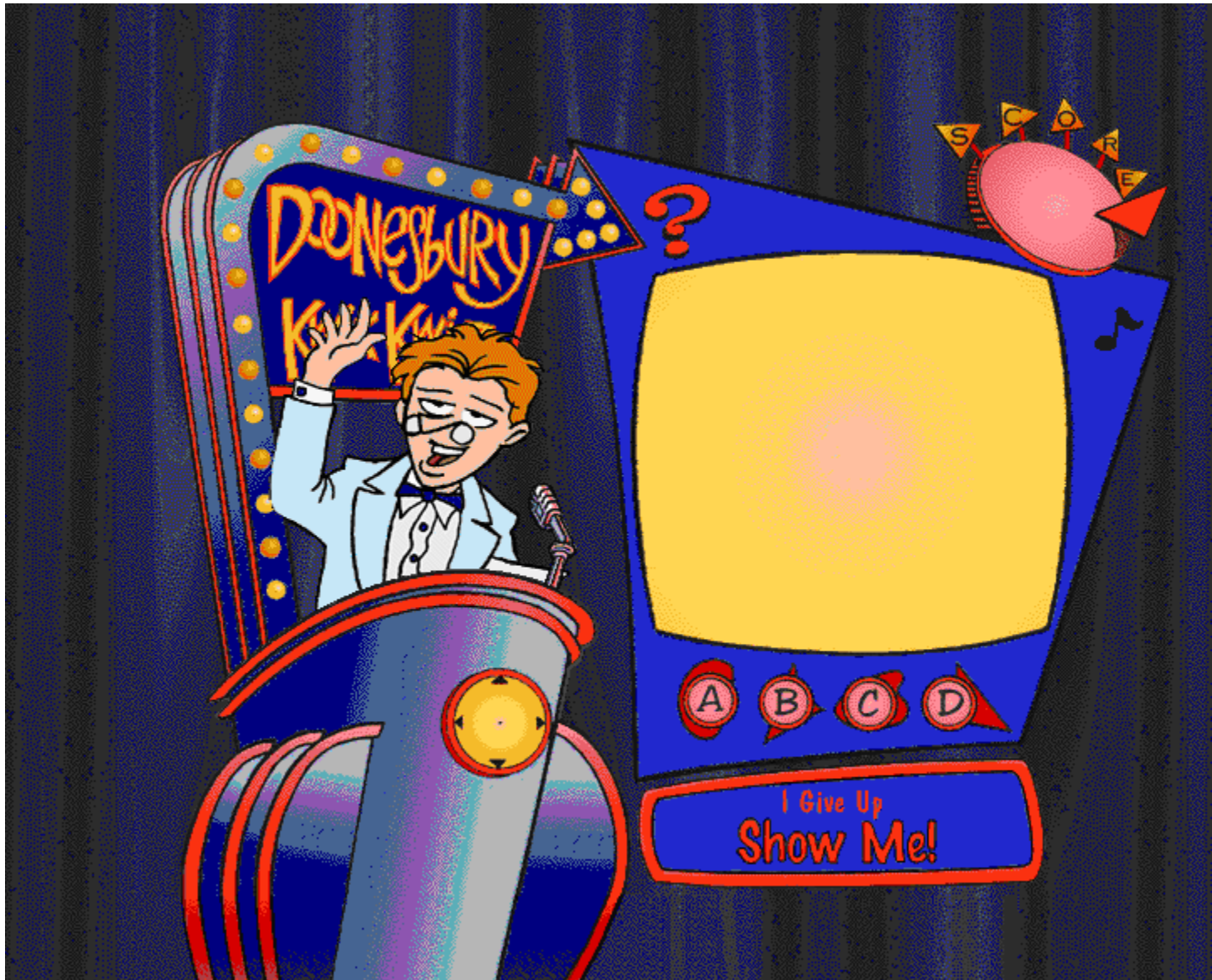
Skip through time with Mike Mirrored.

To use Timeline:

- 1 Click the left and right arrows, at the bottom corners of the screen, to move through time. (A faster way to move through the years is to select a year and move the mouse slightly to the left and right, the years go scrolling by.)
- 2 Each cartoon represents a series of strips related to a story line. Click a cartoon to see the list of strips for each story line.
- 3 As you move through time, the music of that age plays in the background.
- 4 Click the **Flashbacks Main Screen** button to return to the Main Screen.

Note: Gary Trudeau took a sabbatical in 1983, so there are not any strips available for that year.

Trivia Quiz



Test your knowledge with Mike at the Podium, take the Trivia Quiz.

To play the game:

- 1 Wait for the question.
- 2 Select **A**, **B**, **C**, or **D** in the time allotted.
- 3 If you need a hint, click the **Show Me** button.
- 4 If you answer correctly, you get 10 points. If you answer incorrectly, you get -10 points. Every 50 points, you get a prize.
- 5 To see another question, click the **Question Mark**.
- 6 To turn the music off or on, click the **Musical Note**.

7 Click the **Flashbacks Main Screen** button to return to the Main Screen.

Media Room



Hang out with Mark in the Media Room.

- 1 To view **Doonesbury**-related news articles, click the **Articles** button.
- 2 To see one or all of the six **Doonesbury** cartoons, click the **Video** button.
- 3 To find out the author, publisher, and date for all **Doonesbury** comic strip books, click the **Books** button.
- 4 Go to the **Misc.** area and look through posters, scripts, magazines and other various merchandise.
- 5 Just click **Bio**, to read a biography of Gary Trudeau. While you are there, click the picture to page through Gary's photo album.
- 6 Click the **Flashbacks Main Screen** button to return to the Main Screen.

Lists

A list is a series of strips relating to a certain topic or character.

If you have just begun a session, you do not yet have any lists.

To select a list:

- 1 A list can only be selected from the **Chronology** and **Search** Screens.
- 2 Move your cursor to the top of the screen. The [Menu Bar](#) appears.
- 3 Click **List** on the **Menu Bar**, or press **Alt+L**.
- 4 Move your cursor down the menu until the list you want is highlighted.
- 5 Let go of the mouse button.

Note: You can have a maximum of nine lists. The tenth list becomes list number nine and the first list is dropped. To clear your lists, select **Clear Lists** from the **List** pulldown menu.

Menu Bar

To use the **Menu Bar**, move your cursor to the top of the screen.

The following options are available from the **Menu Bar**:

Use:

File Menu

Print

Printer Setup

Exit

To:

(Alt+F,P) Print the strip you are currently viewing.

(Alt+F,U) Set up your printer.

(Alt+F,X) Quit the program and return to Windows.

Screens Menu

Main

Chronology

Characters

Geography

Search

Politics

Timeline

Trivia Quiz

Media Room

(Alt+S,M) Return to the Main Screen.

(Alt+S,C) Go get news in the Chronology Screen.

(Alt+S,H) Go learn about the Characters.

(Alt+S,G) Go travel to the Geography Screen.

(Alt+S,S) Go Search the database.

(Alt+S,P) Go get into Politics.

(Alt+S,T) Go view the Timeline.

(Alt+S,R) Go play Trivia Quiz.

(Alt+S,E) Go to the Media Room.

Options Menu

Sound FX

Music

Animations/Opening

Animations/Wait

Animations/Other

(Alt+O,X) Turn sound effects on or off.

(Alt+O,U) Turn music on or off.

(Alt+O,A ,O) Turn the Opening animation on or off.

(Alt+O,A,W) Turn the wait animations on or off.

(Alt+O,A,T) Turn all other animations on or off.

Help Menu

Contents

About

(Alt+H,C) View Help Contents

(Alt+H,A) View program version information and credits.

Technical Support

Before calling for technical support, please have the following information ready:

- Detailed description of your problem, and the exact steps described in order of occurrence so we can try to reproduce the problem.
- Name/make/model/speed of your computer.
- Copy of your CONFIG.SYS file.
- Copy of your AUTOEXEC.BAT file.
- Name/make/model of your sound card.
- Name/make/model of your video card.
- Print out of the MS-DOS Check Disk command (type CHKDSK and press Enter).
- Make/make/model of printer you are using, and whether it is color or black & white.
- Version of Windows and MS-DOS you are using.
- For Windows and MPC products, we also need a copy of your WINDOWS.INI and SYSTEM.INI files; both of which are in your Window subdirectory.

VERY IMPORTANT: WHEN MAILING IN YOUR PROBLEMS, SUGGESTIONS, OR QUESTIONS, PLEASE INCLUDE THE FOLLOWING INFORMATION:

- Fax number.
- Work phone number.
- Home phone number (or where your computer is most of the time).

For technical support in the **USA**, please contact:

Mindscape, Inc.
88 Rowland Way
Novato, CA 94945

FAX:	(415) 897-5186	
Telephone:	(415) 898-5157	
BBS:	(415) 897-2867	
Automated 800 Service:	(800) 409-1497	Find your own answers--no charge!
America Online keyword:	MINDSCAPE	
CompuServe:	GO MINDSCAPE	
Customer Service	(800) 234-3088	

For technical support in **Europe**, please contact:

Technical Services
Mindscape International Ltd.
Priority House, Charles Avenue
Maltings Park, Burgess Hill
West Sussex, RH15 9PQ
England, United Kingdom
From **outside** the UK:

FAX:	<International Code> 44 1444 248996
Telephone:	<International Code> 44 1444 239600
From inside the UK:	

FAX: 01444 248996
Telephone: 01444 239600
(Monday - Friday, 09:30 - 13:00 hours and 14:00 - 16:30 hours)

For technical support in **Australia** and **New Zealand**, please contact:

Mindscape, Inc.
5/6 Gladstone Road
Castle Hill, New South Wales
Australia 2154

FAX: 02 8992348
Telephone: 02 8992277

